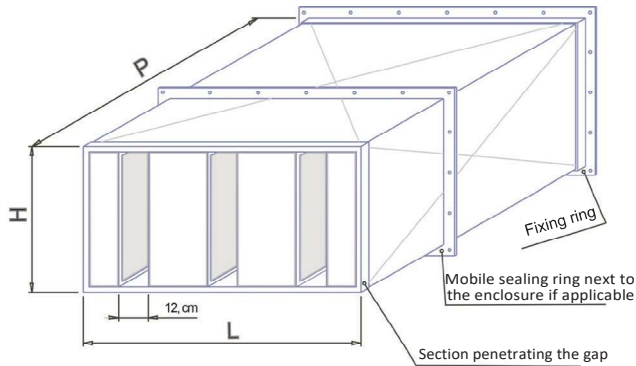
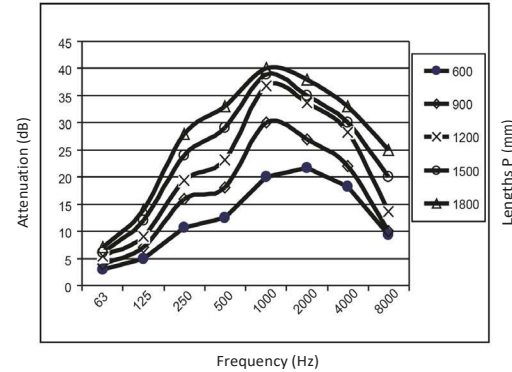


ACOUSTIC ATTENUATOR SILENTIUM ASP 12

ACOUSTIC ATTENUATORS UP TO (*) = 50 dB



LAIC Test 8-202/06
Attenuation due to Length (P) and Noise Frequency (Hz)



P – STANDARD DEPTH:

600, 1200, 1500 or 1800 mm

(**) To the Depth (P) of 1200 mm

The Acoustic Attenuator SILENTIUM ASP 12 is an absorbing element with a determinate depth specially designed for air entrances or exits and/or air conduct incorporations.

Composed by a metallic structure and galvanized steel sheet, incorporates absorbing elements with a black fiberglass veil, allowing high flows with a reduced cargo loss.

TYPICAL APPLICATIONS

Air entrances and exits of cabins, machine rooms and incorporation in all kinds of air conducts.

| STANDARD MODEL | NOMINAL MEASURES (mm) | | RECOMMENDED MAXIMUM FLOW (M3/TH) | WEIGHT (Kg) (**) | NECESSARY MEASURES FOR THE SPAN (cm) | |
|----------------------------|-----------------------|------------|----------------------------------|------------------|--------------------------------------|------------|
| | WIDTH (L) | HEIGHT (H) | | | WIDTH (L) | HEIGHT (H) |
| SILENTIUM ASP 12-P/300/0 | 280 | 300 | 1.361 | 26 | 31 | 32 |
| SILENTIUM ASP 12-P/300/1 | 560 | 300 | 2.624 | 42 | 59 | 32 |
| SILENTIUM ASP 12-P/300/2 | 840 | 300 | 3.888 | 58 | 87 | 32 |
| SILENTIUM ASP 12-P/600/2 | 840 | 600 | 7.776 | 81 | 87 | 62 |
| SILENTIUM ASP 12-P/600/3 | 1.120 | 600 | 10.303 | 102 | 115 | 62 |
| SILENTIUM ASP 12-P/600/4 | 1.400 | 600 | 12.830 | 123 | 143 | 62 |
| SILENTIUM ASP 12-P/900/4 | 1.400 | 900 | 19.246 | 156 | 143 | 92 |
| SILENTIUM ASP 12-P/900/5 | 1.680 | 900 | 23.036 | 182 | 171 | 92 |
| SILENTIUM ASP 12-P/900/6 | 1.960 | 900 | 26.827 | 208 | 199 | 92 |
| SILENTIUM ASP 12-P/1200/6 | 1.960 | 1.200 | 35.770 | 251 | 199 | 122 |
| SILENTIUM ASP 12-P/1200/7 | 2.240 | 1.200 | 40.824 | 282 | 227 | 122 |
| SILENTIUM ASP 12-P/1200/8 | 2.520 | 1.200 | 45.878 | 313 | 255 | 122 |
| SILENTIUM ASP 12-P/1500/8 | 2.520 | 1.500 | 57.348 | 366 | 255 | 152 |
| SILENTIUM ASP 12-P/1500/9 | 2.800 | 1.500 | 63.666 | 402 | 283 | 152 |
| SILENTIUM ASP 12-P/1500/10 | 3.080 | 1.500 | 69.984 | 438 | 311 | 152 |
| SILENTIUM ASP 12-P/1800/10 | 3.080 | 1.800 | 83.981 | 501 | 311 | 182 |
| SILENTIUM ASP 12-P/1800/11 | 3.360 | 1.800 | 91.562 | 542 | 339 | 182 |
| SILENTIUM ASP 12-P/1800/12 | 3.640 | 1.800 | 99.144 | 583 | 367 | 182 |
| SILENTIUM ASP 12-P/2100/12 | 3.640 | 2.100 | 115.668 | 656 | 367 | 212 |
| SILENTIUM ASP 12-P/2100/13 | 3.920 | 2.100 | 124.513 | 702 | 395 | 212 |
| SILENTIUM ASP 12-P/2100/14 | 4.200 | 2.100 | 133.358 | 748 | 423 | 212 |

OPTIONS (UNDER CONSULTATION):

Execution of the attenuators, to the measure of the span and/or maximum flow of the installation and/or pretended attenuation.

POSSIBLE FINISHES (UNDER CONSULTATION):

Inox steel or Paintjob scheme with an enamel primary and finish.

POSSIBLE ACESSORIES (UNDER CONSULTATION):

Anti-rain hats, Anti-birds net, elements for fixation or "Plenums".

TECHNICAL CHARACTERISTICS:

Dimensions: To the measure (L x H) with standard depths of 600, 900, 1200, 1500 or 1800 mm.

Density (of the absorbent): • 70 Kg/m³

Reaction to fire (of the absorbent): MO under the norm UNE 23.727.

Acoustic Attenuation: Up to 40 dB and 1800 mm od depth (check the graphic above).

Cargo Loss: • 5 mm to the recommended maximum flow (check the table above).